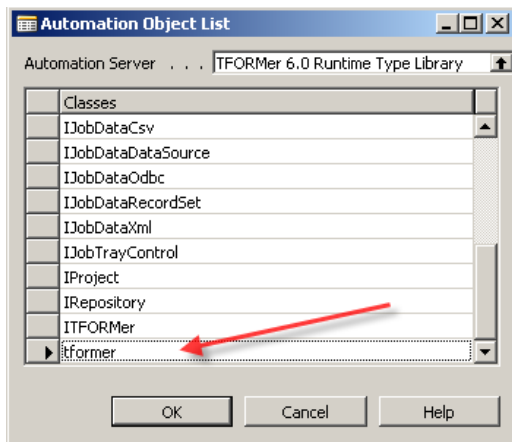
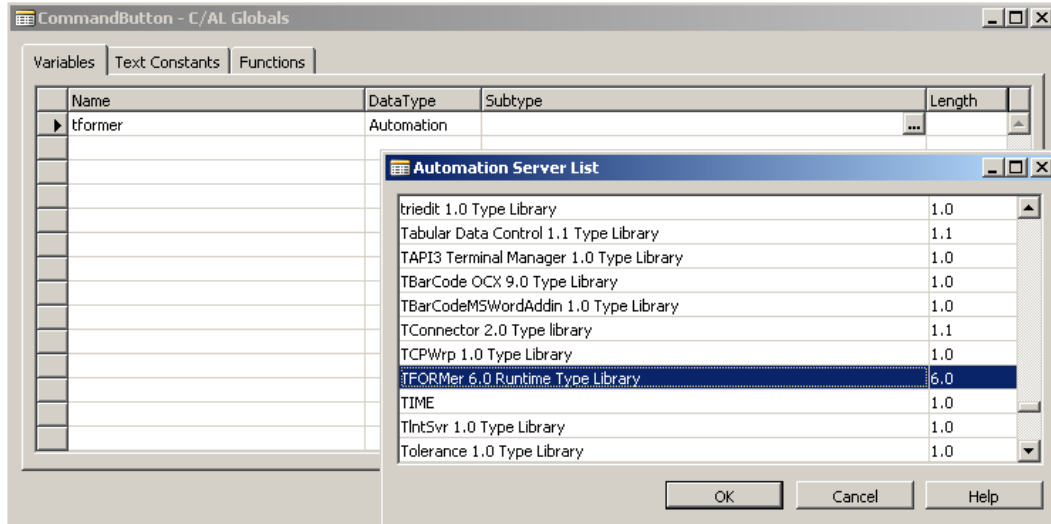


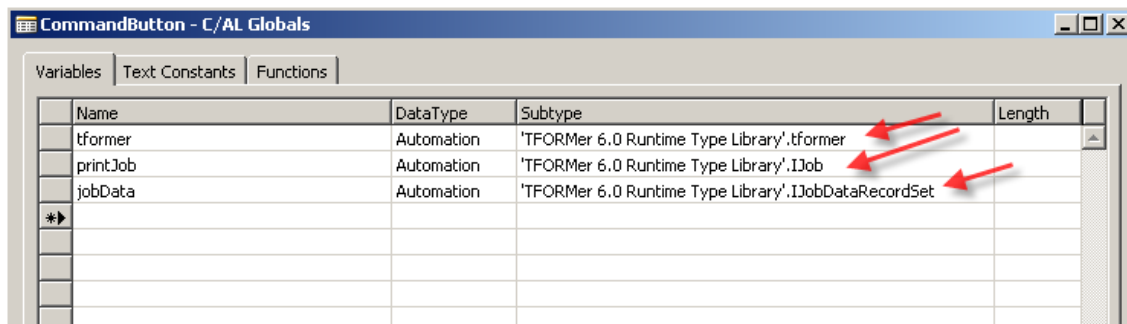
Using TFORMer 6.0 COM Component in Navision

Install the TFORMer SDK 6.0 on your system to use the TFORMer COM component.

Add Global Variables



Add the following three classes from the TFORMer 6.0 Runtime Type Library:



Navision C/AL Sample Code

```
// For printing in TFORMer COM V5 you use three objects
// a TFORMer (base) object : TFORMer60Lib::tformer
// a Job object           : TFORMer60Lib::IJob
// a JobData object       : TFORMer60Lib::IJobDataRecordSet
```

// create TFORMer object

```
CLEAR(tformer);
IF NOT CREATE(tformer) THEN
    ERROR('TFORMer COM object not available!');
```

// create Job object

```
printJob := tformer.CreateJob();
```

// set form layout file (TFF)

```
// standalone forms
printJob.Repositoryname := 'VDA4902.tff';
```

```
// repository based forms
// select form layout from repository (TFR file)
// printJob.Repositoryname := 'c:\myPath\myRepository.tfr';
// printJob.ProjectName := 'myProject';
// printJob.FormName := 'myForm';
```

// set output type

```
printJob.PrinterType := 1 ; // 1 = output to printer
```

// set printer name (leave blank for default printer)

```
printJob.PrinterName := '';
```

```
// output to pdf file
// printJob.PrinterType := 6 ; // 6 = PDF file
// printer name or file path
// printJob.PrinterName := 'C:\myPDF.pdf';
```

```
// other output types (excerpt)
// printJob.PrinterType := 4 ; // 4 = PostScript File
// printJob.PrinterType := 7 ; // 7 = PostScript Printer
// printJob.PrinterType := 11 ; // 11 = Image GIF
// printJob.PrinterType := 18 ; // 18 = ZPL Printer
```

// create job data object (record sets)

```
jobData := printJob.NewJobDataRecordSet();
```

// set data field values

```
jobData.AddNewRecord();
```

```
jobData.SetDataField ('WarenEmpf_Lang1', 'AUTOMOTIVE SUPPLIER AG');  
jobData.SetDataField ('WarenEmpf_Lang2', '');  
jobData.SetDataField ('WarenEmpf_Lang3', 'D-80000 MUENCHEN 40');  
jobData.SetDataField ('WarenEmpf_Lang4', 'FAST"n FURIOUS GMBH - SPEDITION');  
jobData.SetDataField ('WarenEmpf_Lang5', 'ECHING B. MUENCHEN');  
jobData.SetDataField ('LieferscheinNr', 'IA014694');  
jobData.SetDataField ('Lieferantenanschrift', 'NO-ROST STAHL AG ZINCAL-WERK');  
jobData.SetDataField ('GewNetto', '10310');  
jobData.SetDataField ('GewBrutto', '10340');  
jobData.SetDataField ('PackstueckAnz', '2250');  
jobData.SetDataField ('SachNrKunde', '0 166 496');  
jobData.SetDataField ('Fuellmenge', '24');  
jobData.SetDataField ('FuellmengeEH', 'ST');  
jobData.SetDataField ('Lieferbezeichnung', 'RR ST 13 05 MONOZINC');  
jobData.SetDataField ('SachNrLieferant', '123456789');  
jobData.SetDataField ('LieferantenNr', '573496112');  
jobData.SetDataField ('Datum', 'P 901016');  
jobData.SetDataField ('AenderungsstandKonst', '');  
jobData.SetDataField ('PackstueckNr', '103000103');  
jobData.SetDataField ('ChargenNr', '1481781001');
```

// print the form (or write file)

```
printJob.PrintForm();
```