



TEC-IT

WWW.TEC-IT.COM

QuickPrint

Instant Form & Label Printing

Version 5.1

Documentation

21 January 2008

TEC-IT Datenverarbeitung GmbH
Wagnerstrasse 6
A-4400 Steyr, Austria

t ++43 (0)7252 72720
f ++43 (0)7252 72720 77
office@tec-it.com
www.tec-it.com

1 Content

1	Content	2
1.1	Table of Figures	2
2	Disclaimer	3
3	Introduction	4
3.1	What is TFORMer QuickPrint?	4
3.2	How to run TFORMer QuickPrint?	4
3.3	System Requirements	4
3.4	About this Document	4
4	General	5
4.1	User Interface	5
4.2	Working with TFORMer QuickPrint	5
4.3	Configuration Files	6
4.3.1	Configuration management	6
5	Configuration	7
5.1	Common Settings	7
5.2	Select Form Layout	7
5.3	Output Configuration	8
6	Input Area	9
6.1	General	9
7	Print Form	10
7.1	General	10
8	Serial Numbers	11
8.1	General	11
8.2	Printing	11
8.2.1	Changed Serial Number	12
8.2.2	Simultaneous Printing	12
9	Contact and Support Information	13
9.1	Free Support	13
9.2	How to unlock the Demo Version	13
9.3	Company Contact Information	13

1.1 Table of Figures

Figure 1: User Interface	5
Figure 2: Common Settings	7
Figure 3: Form Layout Selection	7
Figure 4: Output Configuration	8
Figure 5: Input Area- List	9
Figure 6: Input Area- Table	9
Figure 7: Serial number file (Example)	11
Figure 8: Print dialog – changed serial number	12
Figure 9: Print dialog– simultaneous printing	12

2 Disclaimer

The actual version of this product (document) is available as is. TEC-IT declines all warranties which go beyond applicable rights. The licensee (or reader) bears all risks that might take place during the use of the system (the documentation). TEC-IT and its contractual partners cannot be penalized for direct and indirect damages or losses (this includes non-restrictive, damages through loss of revenues, constriction in the exercise of business, loss of business information or any kind of commercial loss), which is caused by use or inability to use the product (documentation), although the possibility of such damage was pointed out by TEC-IT.



We reserve all rights to this document and the information contained therein. Reproduction, use or disclosure to third parties without express authority is strictly forbidden.



Für dieses Dokument und den darin dargestellten Gegenstand behalten wir uns alle Rechte vor. Vervielfältigung, Bekanntgabe an Dritte oder Verwendung außerhalb des vereinbarten Zweckes sind nicht gestattet.

© 1998-2008
TEC-IT Datenverarbeitung GmbH
Wagnerstr. 6

A-4400 Austria
t.: +43 (0)7252 72720
f.: +43 (0)7252 72720 77
<http://www.tec-it.com>

3 Introduction

3.1 What is TFORMer QuickPrint?

TFORMer QuickPrint is a tool used for fast printing of reports and forms. You can load existing layouts, fill them with data and print on one of the supported output devices or export them to a supported file format.

In addition **TFORMer QuickPrint** offers the possibility to define data fields as serial numbers. **TFORMer QuickPrint** then ensures the unique allocation of serial numbers on the whole network (works with multiple users as well!).

TFORMer QuickPrint is shipped together with the form-layout designer **TFORMer Designer**.

3.2 How to run TFORMer QuickPrint?

Run **TFORMer QuickPrint** from:

Start ► All Programs ► TEC-IT TFORMer 5.1 ► TFORMer QuickPrint

3.3 System Requirements

- ▶ Windows 2000 or higher.
- ▶ **TFORMer QuickPrint** requires the .NET Runtime 2.0!

3.4 About this Document

This document covers the following issues:

- Description of the user interface and how to work with this program – see Chapter 4.
- Selection of form layout and output type – see Chapter 5.
- Input of the printing data – see Chapter 6.
- Print Form– see Chapter 7.

4 General

4.1 User Interface

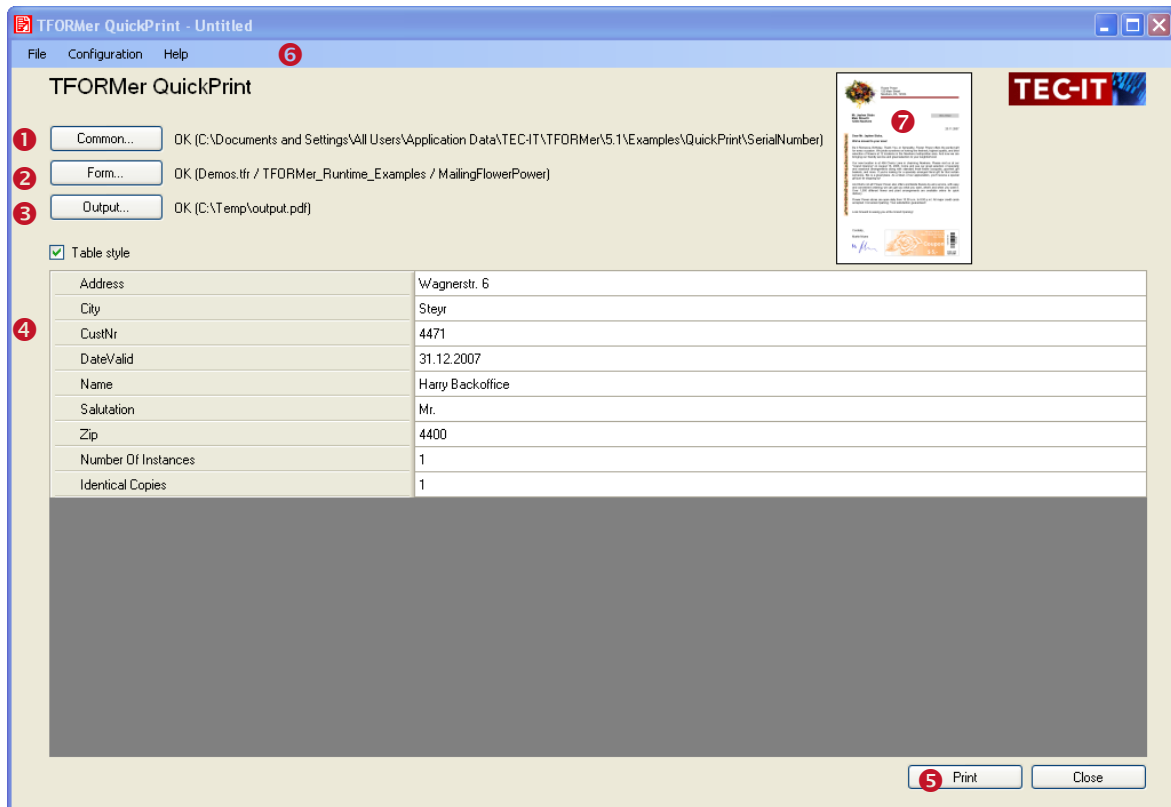


Figure 1: User Interface

The user interface subdivides in the following parts:

- 1 Common Settings. See Chapter 5.1.
- 2 Form layout selection. See Chapter 5.2.
- 3 Output configuration. See Chapter 5.3.
- 4 Input area. See Chapter 6.
- 5 Print. See Chapter 7.
- 6 Menu.
- 7 Preview of the form layout

4.2 Working with TFORMer QuickPrint

First use the buttons 1 to 3 to set up the common settings, the desired form layout and the output type (output in file or on a printer) (see Chapter 5). These settings are also available through the *Configuration* menu.

Next enter the printing data in the input area 4 (see Chapter 6).

Finally start printing with the button Print 5 (see Chapter 7).

4.3 Configuration Files

TFORMer QuickPrint supports loading and saving of configurations with the use of XML-files. These configuration files use the extension *.qpi* and contain the settings from ❶ to ❸.

This gives the user the possibility to easily change the form layout, serial number file and output medium with a mouse-click.

- ▶ When starting **TFORMer QuickPrint** the last saved settings are automatically loaded. You can continue immediately with the data input and printing of the last form layout.
- ▶ To load a specific configuration file, you can pass its path as a command line parameter to **TFORMer QuickPrint**.

4.3.1 Configuration management

You can manage the configurations via the menu entry *File*.

New	Creates a new configuration. All settings are reset to default.
Open...	Loads an existing configuration. The last used printing data is displayed in the input area.
Save / Save as...	Saves the current configuration. The filename can be assigned freely.

5 Configuration

5.1 Common Settings

General program settings can be made via the button *Common*.

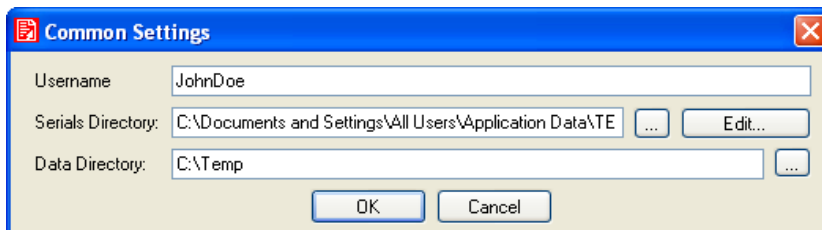


Figure 2: Common Settings

Serial Directory	See Chapter 8
Data Directory	Storage of the last printed data ¹ In this directory, the last printed data is stored. This data is loaded together with the corresponding form layout and displayed in the input area.
Username	Arbitrary username. During every print job, the serial number file is locked for other users. The specified username is used as information which user is printing.

5.2 Select Form Layout

Select via the button *Form* the form layout you want to print.

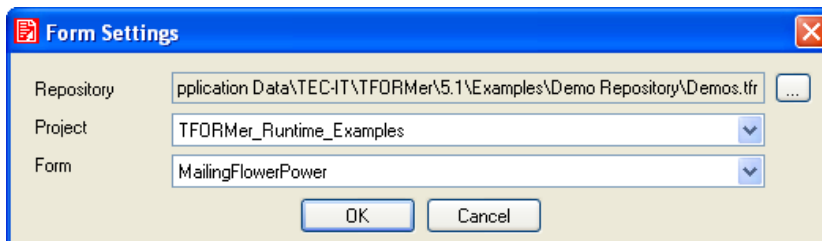


Figure 3: Form Layout Selection

Repository	Select a repository (*.tfr) or stand-alone form layout (*.tff)
Project	Select a project. Select the project inside the repository. Only available if a repository was selected
Form	Select a form layout. Select the form layout inside the project. Only available if a repository was selected.

¹ QuickPrint automatically creates a subfolder for every project. The last printed data is stored under the form name (as an XML file).

5.3 Output Configuration

Choose the output format via the button *Output*.

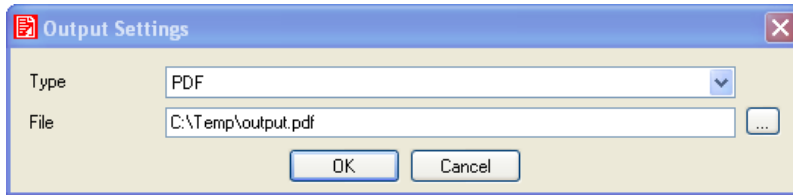


Figure 4: Output Configuration

Type	Select the output format. You can choose one of the following output types: <ul style="list-style-type: none">▪ PDF – output to a PDF file.▪ HTML – output to a HTML file.▪ Text – output to a Text file.▪ PostScript – output to a PostScript file.▪ Printer – output to a printer.
File/Printer	Output file or printer. In dependency of the selected output type, select here the output file or printer.

6 Input Area

6.1 General

After a form layout was selected (see Chapter 5.2), the input area will be enabled.

You can edit the printing data in two different ways: in the form of a list (see Figure 5) or table (see Figure 6). You can switch between those two views with the checkbox ❶.

Table style ❶

ArticleGroup	Furniture
ArticleName	Table
ArticleNo	1421 ❷
ArticlePrice	150
Number Of Instances	1
Identical Copies	1

Figure 5: Input Area- List

Table style ❶

	ArticleGroup	ArticleName	ArticleNo	ArticlePrice	Number Of Instances	Identical Copies
	Furniture	Table	1421 ❷	150	1	1
	Furniture	Chair	1422	50	4	1
	Furniture	Vase	1426	12	1	1
*			1427 ❸			


Figure 6: Input Area- Table

In this example, the data field „ArticleNo“ will be filled automatically with a serial number (clearly recognizable on the gray-shading ❷). All other data has to be entered manually.

- ▶ Multiple data sets can only be entered in the table view!
Edit the data set in the last row and press the *return key*.
A new data row will be added (see ❸).

7 Print Form

7.1 General

To start printing (or the output to a file) press the button *Print* (see Figure 1, ). The output takes place on the printer specified under *Output* (see Chapter 5.3).

- File: The file is opened automatically with the linked Windows® application after it has been created successfully (e.g. PDF with Acrobat Reader).
- Printer: no further confirmation.



8 Serial Numbers

8.1 General

Automatic generation of serial numbers (optional).

To automatically fill a data field with serial numbers, you can specify the path to a serial number file in the Common options (see Chapter 5.1). With this file **TFORMer QuickPrint** automatically calculates consecutive numbers for one or more data fields.

The filled data fields are shaded in gray in the input area (see Figure 5 und Figure 6). Those fields cannot be edited by the user.

The serial number file has to be named „*QuickPrint.XML*“. You can save this file in an arbitrary directory.

- ▶ If no serial number file was specified, you cannot use the automatic serial number generation.
- ▶ You can specify several directories for different serial number configurations.

The file *QuickPrint.XML* saves the actual values for one or more serial numbers (data fields). In addition the step width for the increment of the numbers can be specified here. You can specify an arbitrary number of data fields.

Example:

```
<?xml version="1.0" standalone="yes"?>
<root>
  <SerialNumber current="1456" stepSize="1" />
</root>
```

Figure 7: Serial number file (Example)

In this example file the data field named *SerialNumber* is treated as a serial number. The actual value of this data field is set to *1456*. If **TFORMer QuickPrint** prints a form using this data field, the value of this data field will be incremented by 1 (parameter *stepSize*).

8.2 Printing

When printing **TFORMer QuickPrint** uses the following procedure:

1. When loading a form layout **TFORMer QuickPrint** checks whether the form contains data fields marked as serial numbers. If so, these data fields are shaded in gray. Those data fields cannot be altered manually.
2. After the button *Print* has been pressed **TFORMer QuickPrint** opens the serial number file and locks it for other users.
3. The actual serial number values are read from the serial number file
4. After the print is finished, the serial number file is updated and unlocked. Other users can now print forms, using serial numbers and the same serial number file, once again.

8.2.1 Changed Serial Number

If the serial number changed while editing the printing data (another user printed the same form in the meantime), you get the following warning:

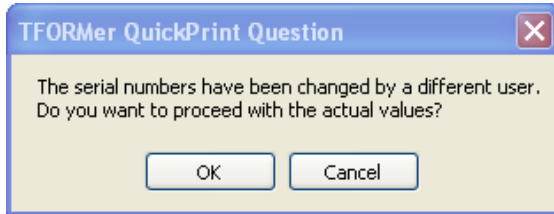


Figure 8: Print dialog – changed serial number

You can react on the changed counter state as follows:

- **OK:** The used serial numbers will be updated and printed.
- **Cancel:** The used serial numbers will be updated and the print aborted.

8.2.2 Simultaneous Printing

If you try to print a form containing serial numbers which is already being printed by another user, you will get the following error:



Figure 9: Print dialog– simultaneous printing

Solution: Start the print a few moments later again.

- ▶ If you cannot print for a considerable time, check whether the print job which causes the lock, is still active. If not, delete the lock file „*QuickPrint.lck*“. You can find this file in the same directory as the „*QuickPrint.XML*“.

9 Contact and Support Information

9.1 Free Support

If you have questions, need help or simply want to tell us about your application, contact:

Email: support@tec-it.com

Web: <http://www.tec-it.com/support/>

Don't hesitate to contact us - let us hear your feedback! If the product does not fulfill your requirements, please tell us why. We are highly interested in meeting the requirements of our customers.

9.2 How to unlock the Demo Version

You can unlock the demo version with a license key. License keys can be obtained from TEC-IT by Email, online order form or FAX.

Email: sales@tec-it.com

Online: <http://www.tec-it.com/order/>

Fax: +43 / (0)7252 / 72 72 0 – 77

9.3 Company Contact Information

TEC-IT Datenverarbeitung GmbH

Address: Wagnerstrasse 6
AT-4400 Steyr
Austria/Europe

Phone: +43 / (0)7252 / 72 72 0

Fax: +43 / (0)7252 / 72 72 0 – 77

Email: support@tec-it.com

Web: <http://www.tec-it.com>

AIX is a registered trademark of IBM Corporation.

HTML, DHTML, XML, XHTML are trademarks or registered trademarks of W3C, World Wide Web Consortium, Laboratory for Computer Science NE43-358, Massachusetts Institute of Technology, 545 Technology Square, Cambridge, MA 02139.

JAVA® is a registered trademark of Sun Microsystems, Inc., 901 San Antonio Road, Palo Alto, CA 94303 USA.

JAVASCRIPT® is a registered trademark of Sun Microsystems, Inc., used under license for technology invented and implemented by Netscape.

Microsoft®, Windows®, Microsoft Word®, Microsoft Excel® are registered trademarks of Microsoft Corporation.

Navision is a registered trademark of Microsoft Business Solutions ApS in the United States and/or other countries.

Oracle® is a registered trademark of Oracle Corporation.

PCL® is a registered trademark of the Hewlett-Packard Company.

PostScript is a registered trademark of Adobe Systems Inc.

SAP, SAP Logo, R/2, R/3, ABAP, SAPscript are trademarks or registered trademarks of SAP AG in Germany (and in several other countries).

All other products mentioned are trademarks or registered trademarks of their respective companies. If any trademark on our web site or in this document is not marked as trademark (or registered trademark), we ask you to send us a short message (<mailto:office@tec-it.com>)