

TEC-IT Datenverarbeitung

TFORMer

Server Edition

Version 4

enterprise printing

1 Content

1	Content	2
2	Limitation of Liability	3
3	Introduction	4
3.1	General	4
3.2	Testdrive	4
4	Architecture	5
5	Demo Installation	6
5.1	Install TFORMer Server	6
5.2	Install TFORMer Designer	6
5.3	License TFORMer Designer	6
5.4	License TFORMer Server	6
5.5	Configure TFORMer Server	6
5.6	Adjust TFORMer Server Startup-Settings	6
6	Requirements	7
6.1	System requirements	7
7	TFORMer Server	8
7.1	Install TFORMer Server	8
7.2	Starting TFORMer Server	14
7.3	Activating TFORMer Server	15
7.3.1	Server activation	15
7.3.2	Default printer activation	16
7.3.3	Printing the test label	17
7.4	Installation finished	18
8	TFORMer Designer	19
8.1	Install TFORMer Designer	19
8.2	Start TFORMer Designer	21
8.3	Enable TFORMer Server Edition	21
8.4	Open a TFORMer Server Repository	22
8.5	Trying TFORMer	23
8.6	23	23
9	Contact	24
10	Support	24

2 Limitation of Liability

The product is available as is. TEC-IT disclaims any liability and any warranty, whether express or implied and in general it disclaims particularly any warranties of merchantability, fitness for a particular purpose, any liability for indirect, incidental, consequential, special or exemplary damages or lost profits and in general any liability for damages of any third party and damages, that are not caused by TEC-IT's intent or culpable negligence. Installing or using this software implies accepting this license agreement.

TEC-IT reserves the right to replace any existing version of their software products, to offer new software products or to discontinue an existing product at any time and without notice. TEC-IT will for the most part, make the compatibility with subsequent versions and the validity of existing software keys beyond the end of a version, possible. Furthermore no claims can be made against TEC-IT in the event that the software is not, no longer or not completely compatible to a prior version.

Liability

Für dieses Dokument und den darin dargestellten Gegenstand behalten wir uns alle Rechte vor. Vervielfältigung, Bekanntgabe an Dritte oder Verwendung außerhalb des vereinbarten Zweckes sind nicht gestattet.

We reserve all rights to this document and the information contained therein. Reproduction, use or disclosure to third parties without express authority is strictly forbidden.

© 1998-2005
TEC-IT Datenverarbeitung GmbH
Wagnerstr. 6
A-4400 Austria

© 1998-2005
TEC-IT Datenverarbeitung GmbH
Wagnerstr. 6
A-4400 Austria

Introduction

Testdrive

3.1 General

TFORMer Server is the professional output solution optimized for industrial needs. **TFORMer Server** covers all requirements in this area - ranging from state-of-the-art form design with **built-in bar-coding** features up to **industrial-strength output-management** for 24/7 environments.

With **TFORMer all business and industrial forms** - like reports, labels, serial letters, compliance labels, business letters and many more - can be created and printed easily.

Forms become „intelligent“ with **TFORMer’s** rich reporting functionality (like computed data fields, conditional logic and numerous operational functions). **No programming skills are required!**

TFORMer closes the gap between everyday label printing tools and report generators. **TFORMer** combines the best from both areas and offers the optimal solution for industrial output.

TFORMer stands for quick and easy form design, high flexibility, perfect bar code support and - if required - for the complete administration of forms in a centralized depot.

TFORMer separates data from design, doesn’t bind forms to particular printers (change hardware easily) and offers full database independence.

In short: **TFORMer’s** reusability and flexibility secure your investment. You expect hassle-free operation – and **TFORMer** delivers it.

3.2 Testdrive

Interested in a quick demo of **TFORMer** capabilities? Check out the following pages...

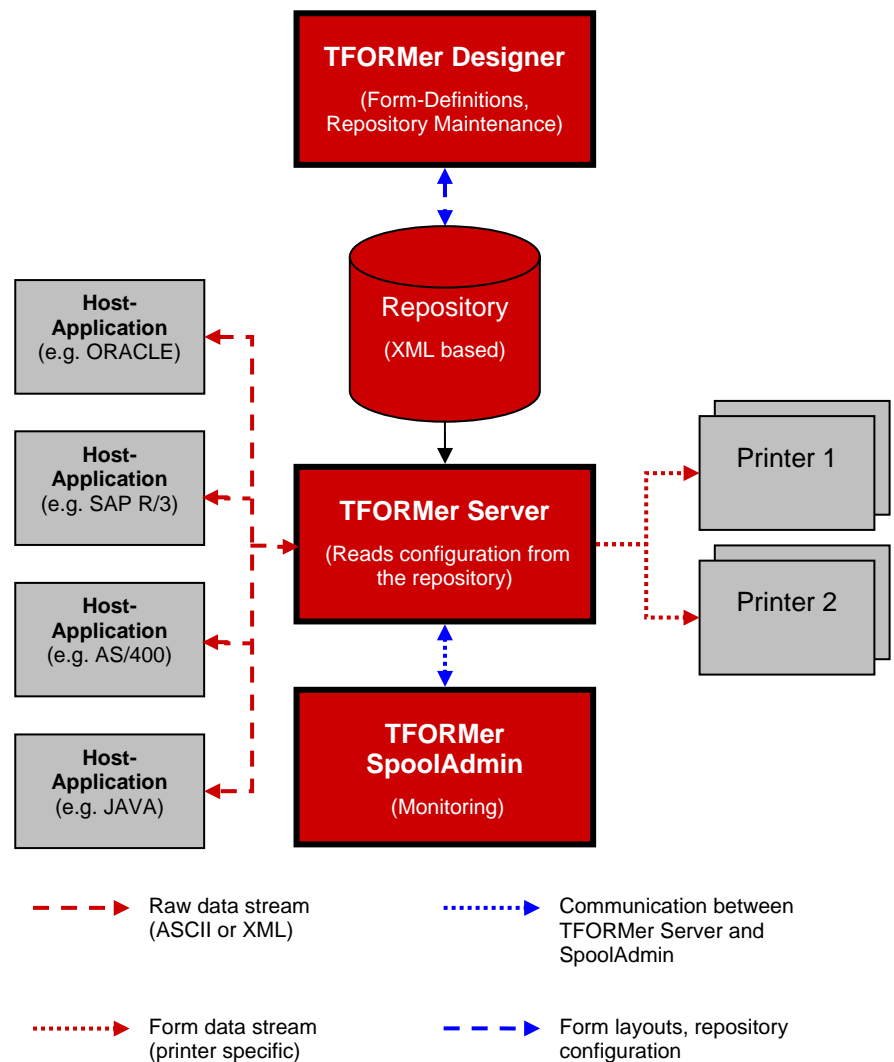
4 Architecture

TFORMer comes as multi-module system:

TFORMer Designer: This application is used to design your forms and labels and to configure TFORMer Server via the repository (a central XML-based data-base). Instead of programming forms with device specific escape sequences or hard-to-understand print-controls take advantage of TFORMer's WYSIWYG form designer.

TFORMer Server: The server application – implemented as a watchdog secured system service - takes care of the actual printing process. The repository contains all form definitions, all defined target printers, all data fields and all connections to host applications (like SAP R/3 or legacy applications). TFORMer Server connects automatically to configured host-applications or host-systems, retrieves print-job data and takes care of the correct output.

TFORMer Monitoring: This application is used for monitoring TFORMer Server. It can be installed on arbitrary machines in your network. Moreover – TFORMer SpoolAdmin can be customized to fulfil shop-floor specific requirements: it offers a simple to understand user interface and is touch-screen ready.



5 Demo Installation

Please follow the specified steps in order to get a working **TFORMer Server** demo installation:

5.1 Install TFORMer Server

Check out chapter 7 - TFORMer Server.

5.2 Install TFORMer Designer

Check out chapter 8 - TFORMer Designer.

5.3 License TFORMer Designer

Not required for the demo.

Limitations to be expected in the unlicensed version:

- Print-Outs are marked with a demo notice
- Bar-codes are marked with an additional horizontal bar
- Saving form layouts is delayed

5.4 License TFORMer Server

Not required for the demo.

Limitations to be expected in the unlicensed version:

- Only one output printer may be operated (the Windows default printer)
- Print-outs are marked with a demo notice
- Bar-codes are marked with an additional horizontal bar

5.5 Configure TFORMer Server

Not required for the demo.

However - TFORMer Server supports a bunch of various configuration options (e.g. different connections to host applications). Please check out the documentation or contact TEC-IT for details.

5.6 Adjust TFORMer Server Startup-Settings

Not required for the demo.

Again - TFORMer Server supports a bunch of various configuration options. Please check out the documentation or contact TEC-IT for details.

6 Requirements

6.1 System requirements

For a correct installation please ensure, that

- You are running one of the following operating system:
 - Windows NT 4.0 with SP4 or higher
 - Windows 2000
 - Windows 2003
 - Windows XP
- Both Workstation and Server variants of the operating system can be used.
- You are logged on with local administrative privileges
- You install **TFORMer Server** under a domain-wide user-account. It is recommended that you use your personal domain account for the demo. In this documentation the domain-user TEC-IT\GuenterK is used.

Requirements

7 TFORMer Server

7.1 Install TFORMer Server

Please start the executable TFORMerServer_Setup.exe. The actual file name may differ due to versioning.

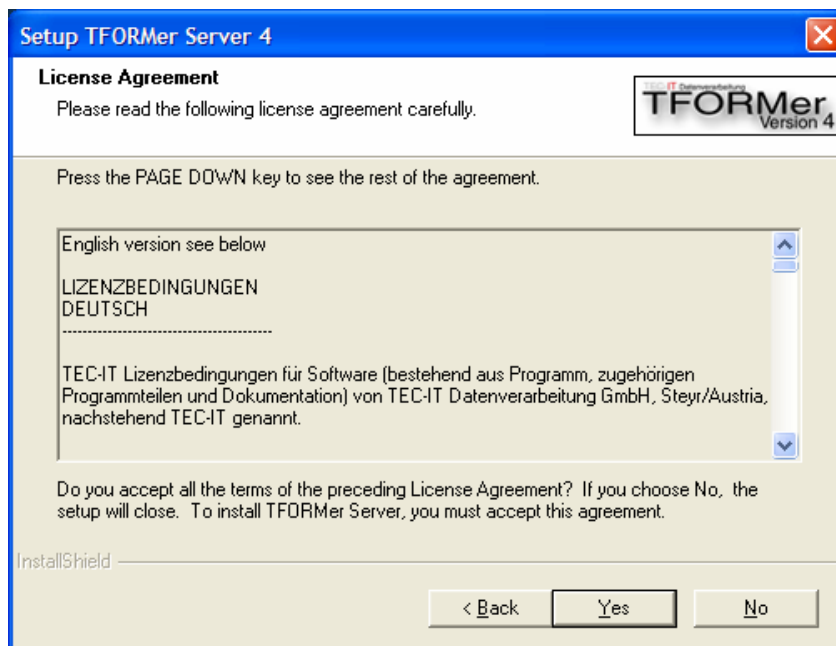
Picture 1: Setup TFORMer Server



Please confirm the welcome dialog by clicking „Next“

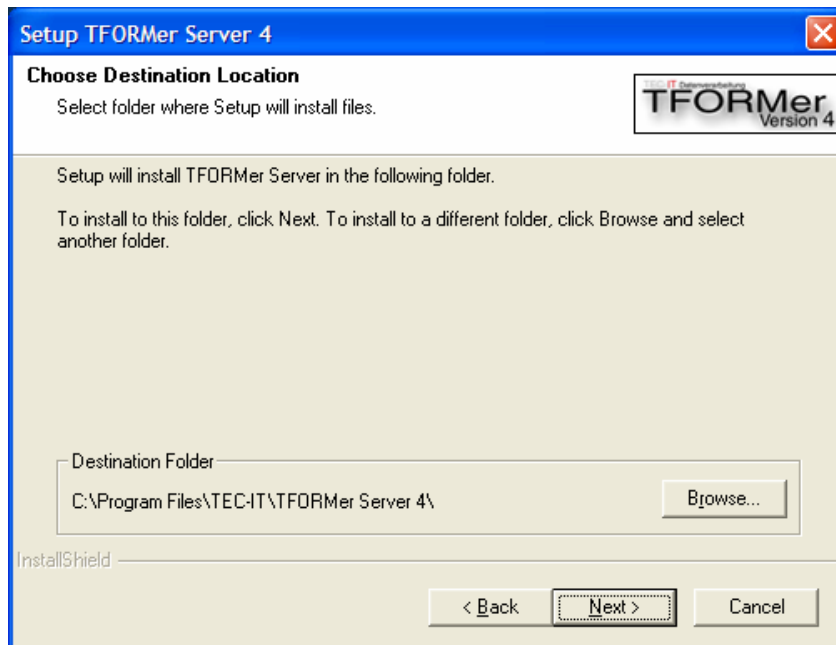
License Terms

Picture 2: Accept License Terms



Please accept the license terms by clicking „Yes“.

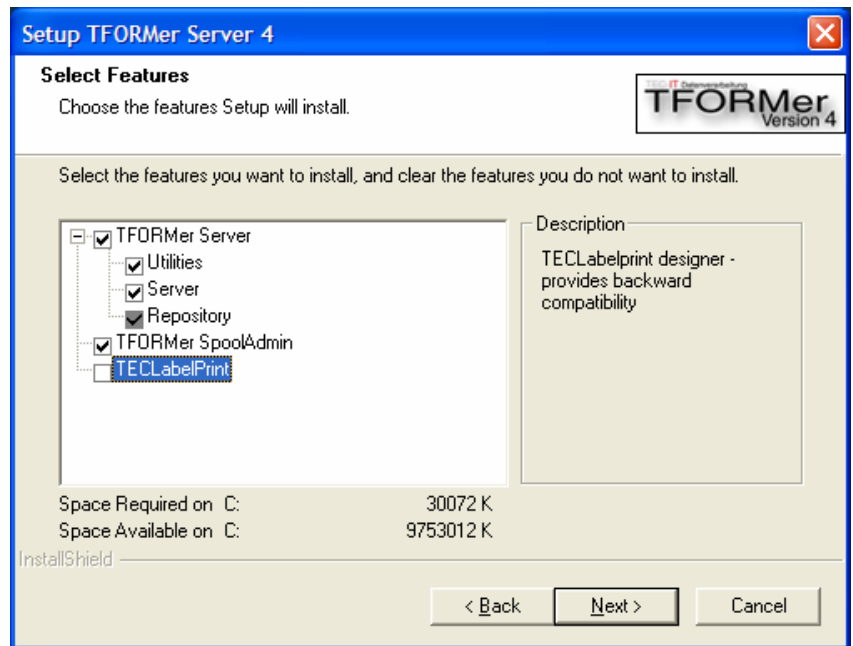
Picture 3: Choose the installation path



Installation Path

Please confirm the suggested path by clicking „Next“ (this path will be referenced in chapter 8.4 - Open a TFORMer Server Repository). The installation procedure now asks you for the required installation features:

Picture 4: Select Features



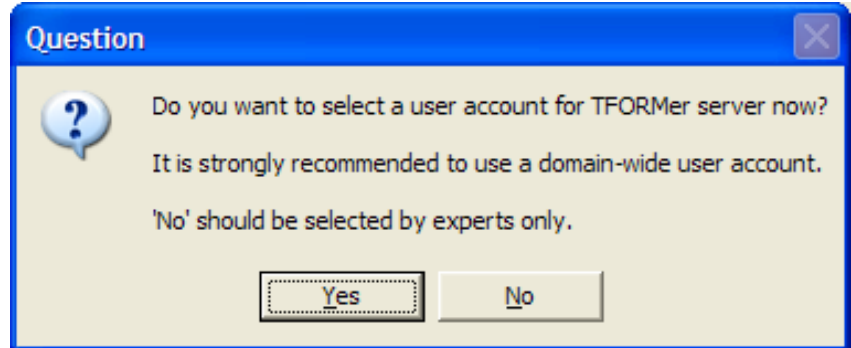
Feature selection

For the demo select the required features as specified in the table below. Press “Next” when finished.

Feature	Description
TFORMer Server	Required
Utilities	Required <ul style="list-style-type: none"> ■ TFORMer Server tools
Server	Required <ul style="list-style-type: none"> ■ TFORMer Server (EXEs, DLL's, additional files) ■ TECLauncher (System-Service / Watchdog for TFORMer Server) ■ InstMon (virtual Printer installation) ■ TECUserExe (API-Konnektor)
Repository	Required <ul style="list-style-type: none"> ■ TFORMer Server sample configuration
TFORMer SpoolAdmin	Required <ul style="list-style-type: none"> ■ TFORMer Server remote monitoring
TECLabelPrint	Not Required <ul style="list-style-type: none"> ■ This feature is supplied only for backward compatibility to previous TFORMer Server versions.

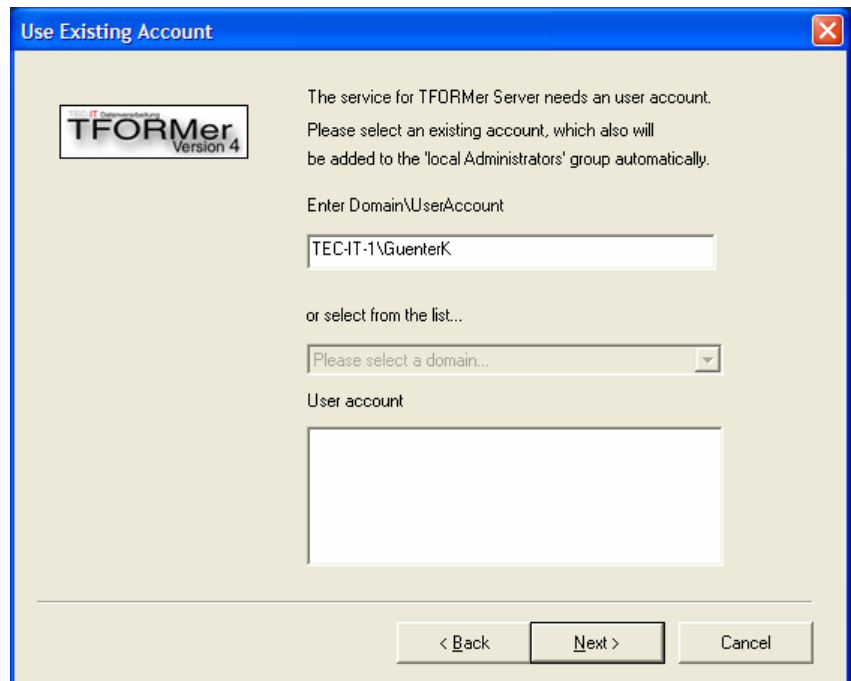
User Account

Picture 5: Select User-Account



Please confirm the question by clicking „Yes“.

Picture 6: Select User

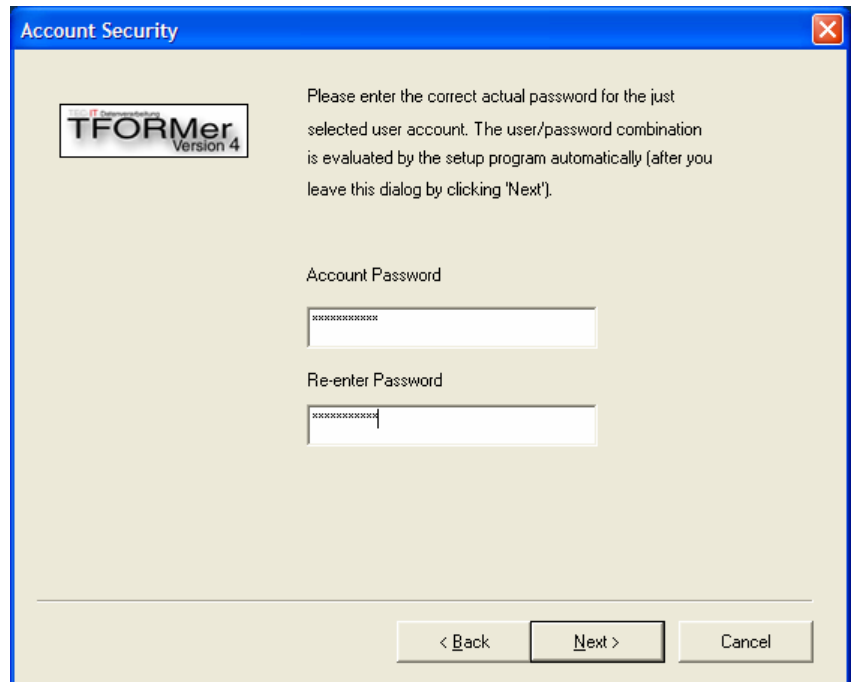


Enter your user name (including the leading domain name – as shown above) or select your domain and click your user-name.

Confirm your selection with “Next”

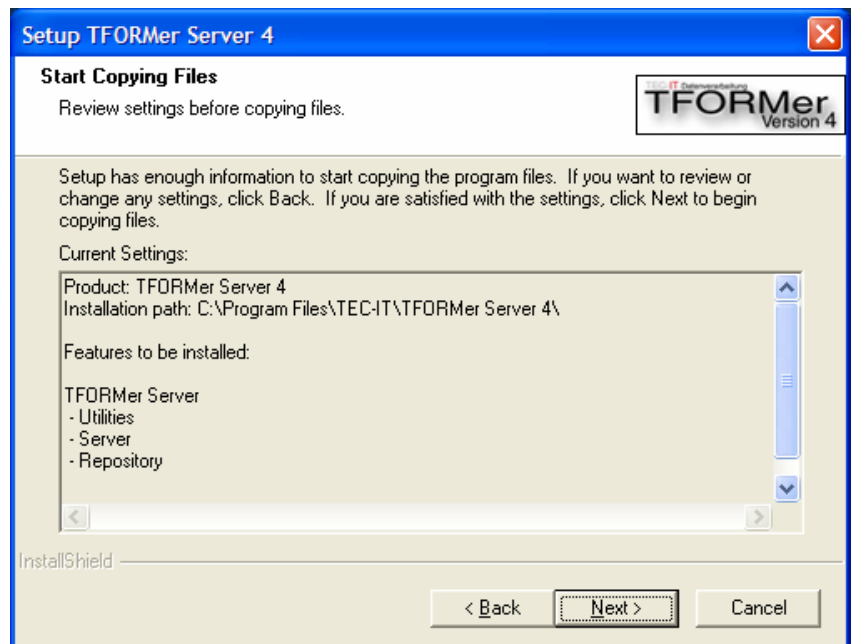
Password

Picture 7: Enter password

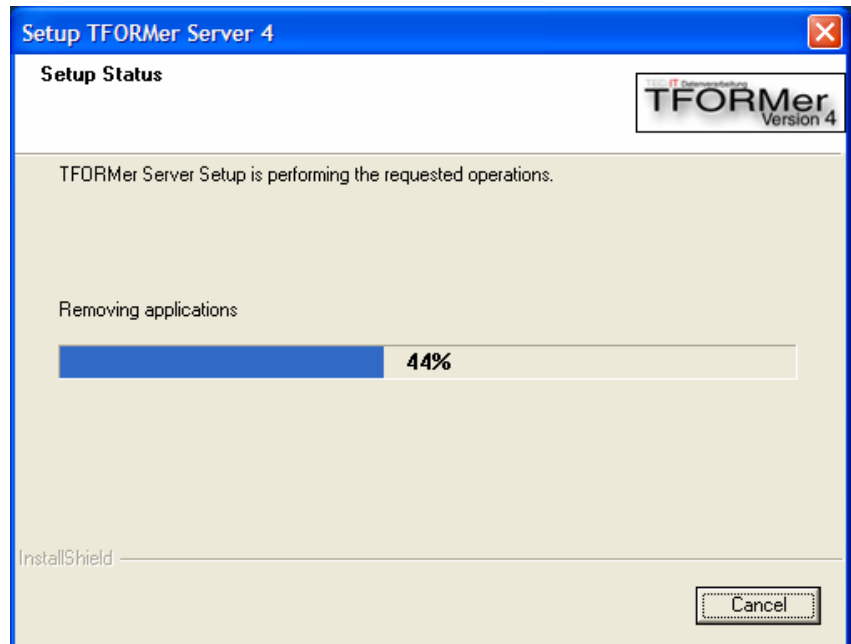


Enter the correct password twice and press "Next". The setup application verifies the specified credentials and displays a setup summary.

Picture 8: Password verification



Picture 9: Copying files



If everything is correct setup continues by copying all files onto your system and registering system components. You will recognize that some windows are displayed for a short time – this is normal behavior.

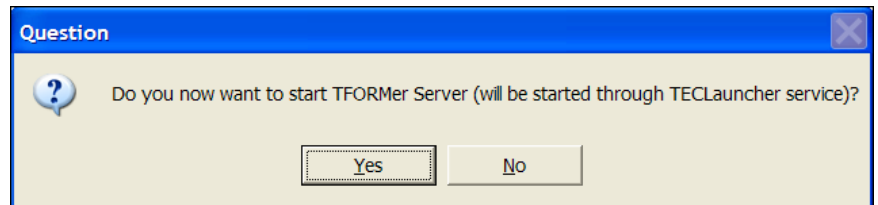
Please note:

- the specified User-Account is added by the setup application to the "Local Administrator Group" automatically.
- the specified User-Account is assigned the right „Log on as a Service“ automatically.

7.2 Starting TFORMer Server

After the setup application has copied all required files you are prompted to start **TFORMer Server**:

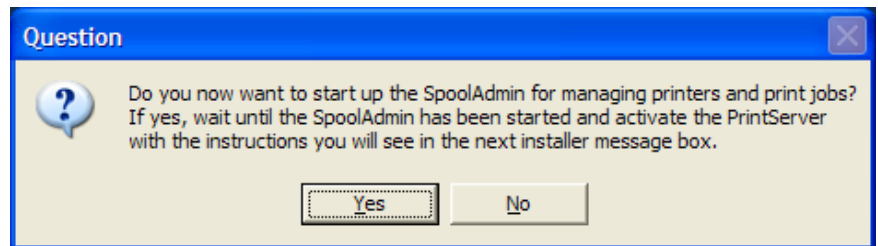
Picture 10: Start TFORMer Server



Confirm this message with „Yes“. The server application is started as system service and you are able to print a test-label later on.

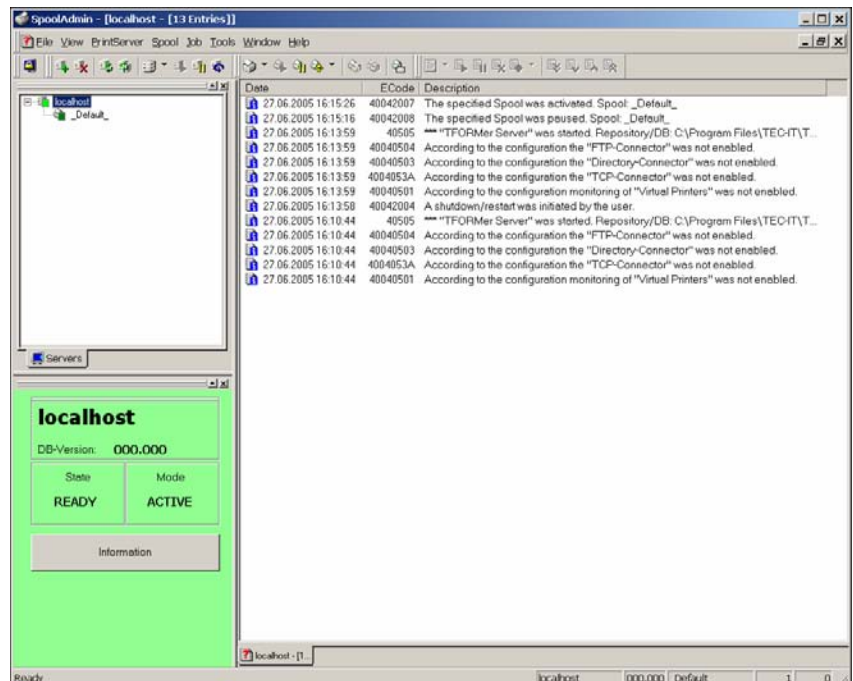
In order to monitor **TFORMer Server** operation, start **TFORMer SpoolAdmin**:

Picture 11: Start TFORMer Server Monitoring



By confirming with “Yes” the setup application is instructed to launch **TFORMer SpoolAdmin**. The following application appears:

Picture 12: TFORMer Server Monitoring

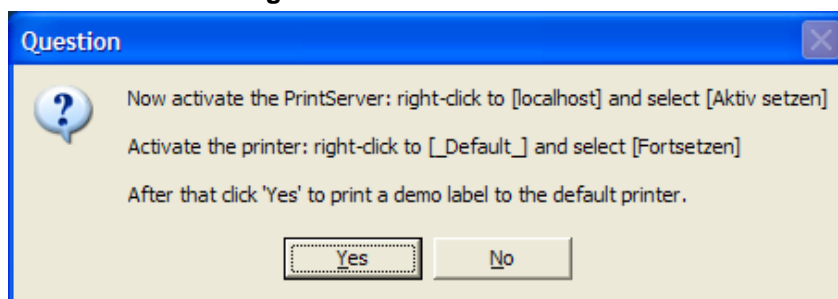


TFORMer SpoolAdmin connects via DCOM to the local TFORMer Server installation (running on system "localhost"). The information window is displayed in yellow – meaning that a warning message is available. This initial warning message is displayed because TFORMer Server detects that it was started the first time – and therefore it is running in passive mode (passive mode stands for "spooling only". In other words: print requests are received – but not processed by TFORMer Server).

7.3 Activating TFORMer Server

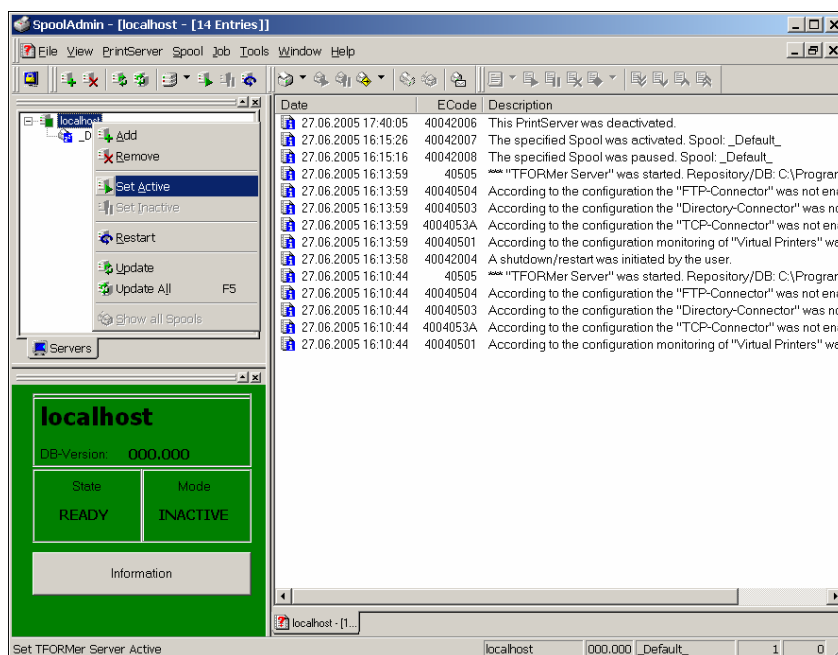
Please follow the instructions in the next information window in order to activate TFORMer Server (activating means that TFORMer Server is receiving AND printing jobs):

Picture 13: Activating TFORMer Server

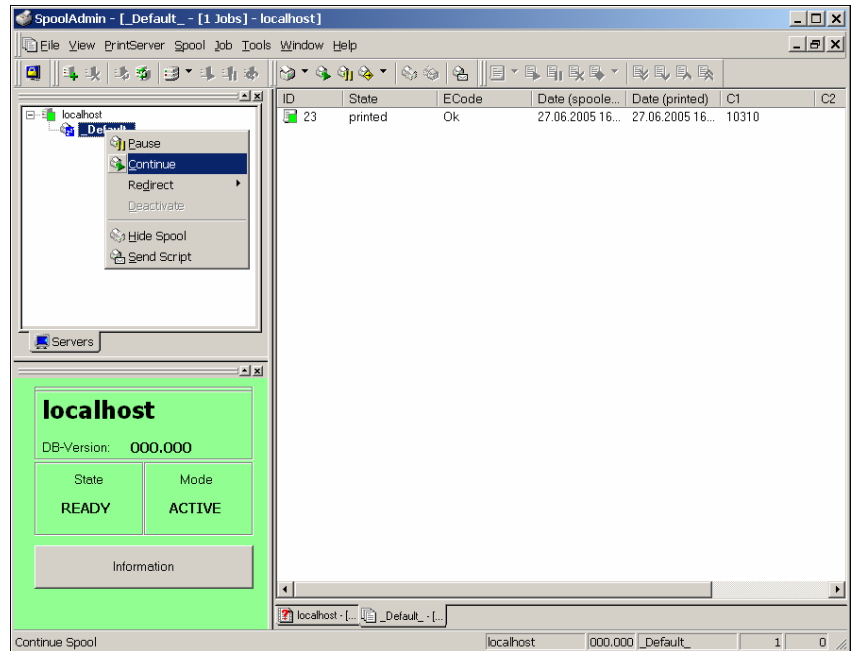


7.3.1 Server activation

Switch TFORMer Server to active mode. To do this, right click on localhost and select "Set Active".



7.3.2 Default printer activation

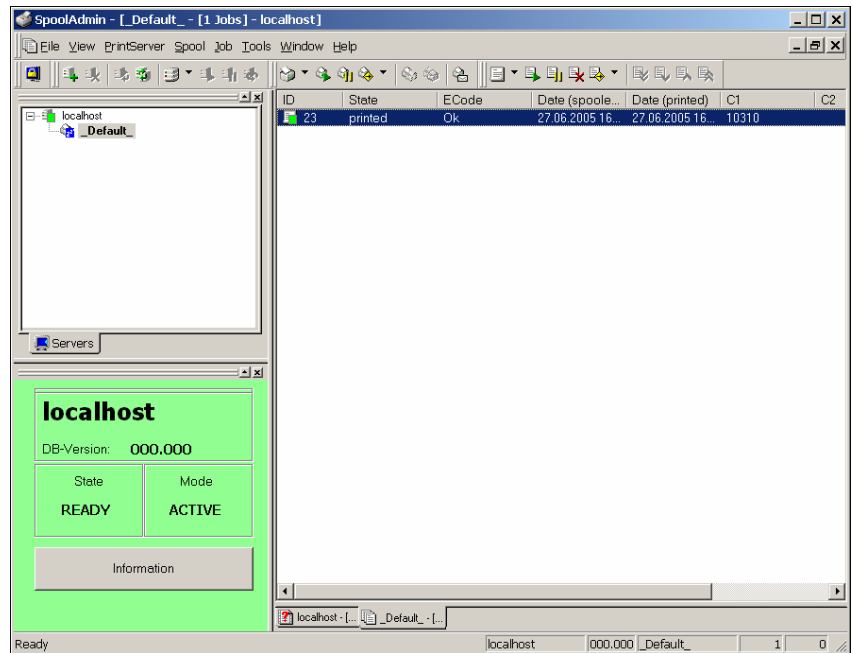


Now activate the printer too. To do this, right click on the printer _Default_: and select "Continue".

7.3.3 Printing the test label

After clicking “Yes” TFORMer Server is instructed to print a test-label on the default printer. Please check your printer for a so-called VDA label (a sample of this label is shown in the left column of this page).

Picture 14: Printing the test-label

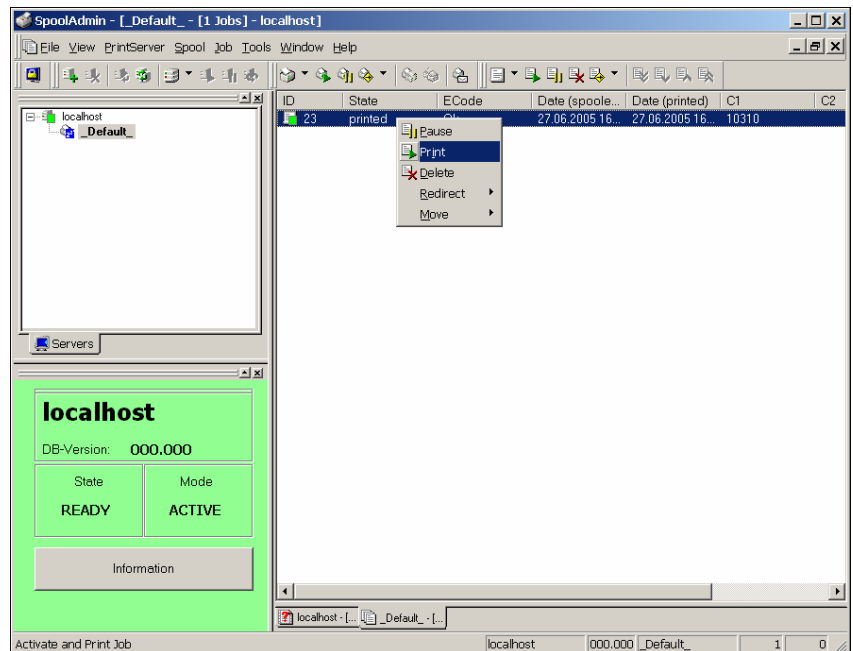


Test Label



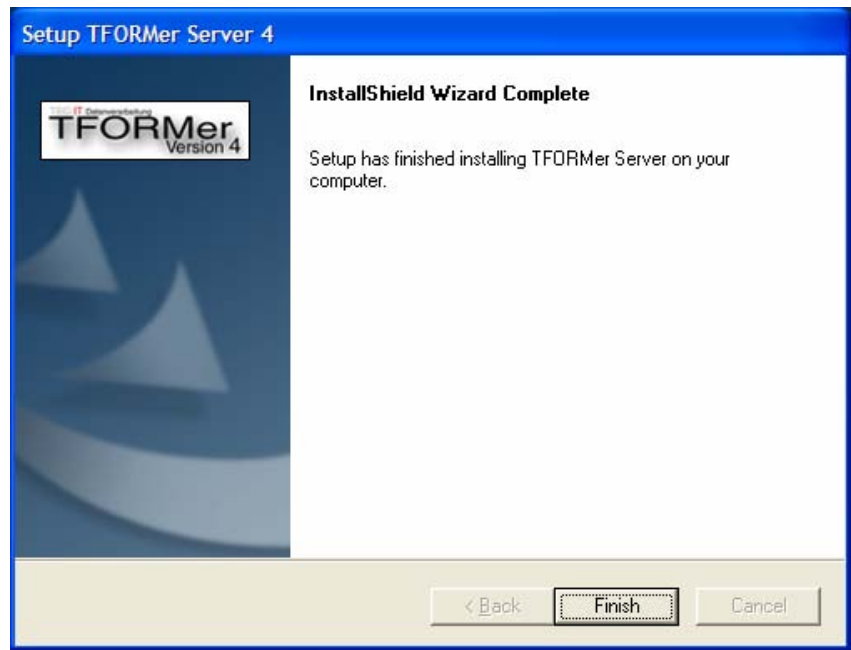
You can also check the job-list of the default-printer. You will see a new job which was also sent to the printer (right click the job for printing it again)

Picture 15: Reprinting the test-label



7.4 Installation finished

- If everything worked fine – congratulations! **TFORMer Server** was installed correctly. If there are any problems please contact TEC-IT for free support (see chapter 10 - Support)



8 TFORMer Designer

8.1 Install TFORMer Designer

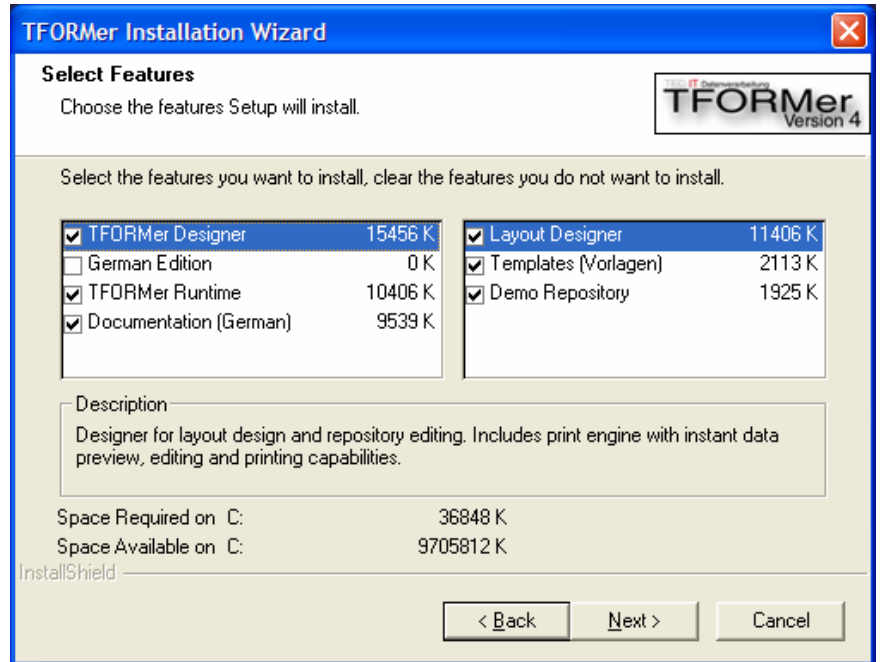
Please start the executable TFORMerDesigner_Setup.exe. The setup process is straight-forward therefore not all screens are shown.

Picture 16: Setup TFORMer Designer



Follow the instructions of the setup application and confirm the single pages with clicking "Next" until the feature page is selected:

Picture 17: Select Features



For the English front-end mark the options as shown above. If the German user interface is preferred select “German Edition”.

Click Next until the last page of the setup application appears. Then click “Finish” – this will start the file copy process.

8.2 Start TFORMer Designer

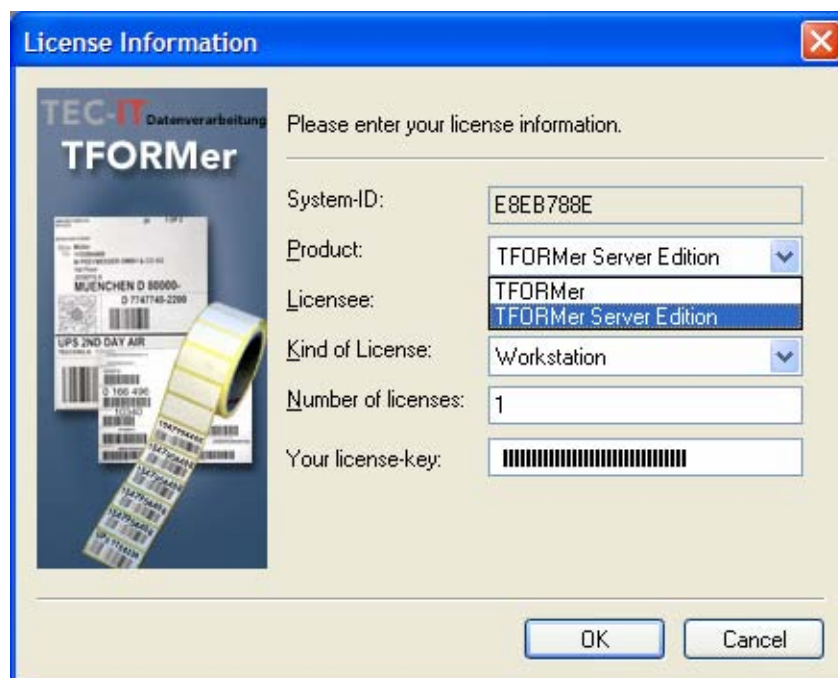
After the installation procedure is complete start **TFORMer Designer** using the Windows Start-Menu (TEC-IT TFORMer4 -> TFORMer Designer). **TFORMer Designer** is launched showing an empty workspace.

8.3 Enable TFORMer Server Edition

TFORMer Designer is usually started in “simple” mode (just with label design and label printing features). In order to enable **TFORMer Server** configuration with **TFORMer Designer** this enhanced feature must be enabled:

In the menu bar click **Help** and thereafter **Licensing**. The following screen appears:

Picture 18: TFORMer Designer Server Edition



In the line “Product” select the entry **TFORMer Server Edition** and press OK.

➤ **TFORMer** complains about an invalid license key. Please ignore this message – it is normal for the demonstration installation.

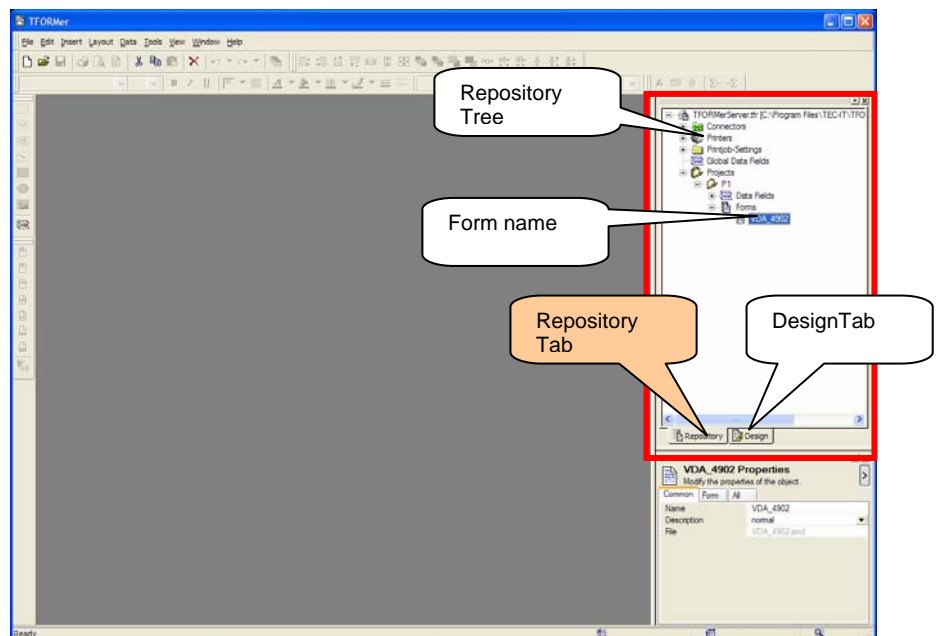
8.4 Open a TFORMer Server Repository

The **TFORMer Designer Server Edition** enables the user to additionally configure **TFORMer Server** parameters (like target devices, host-systems to be queried for print job data, and so on).

In order to open the sample configuration of **TFORMer Server** (as installed in chapter 7 - TFORMer Server) perform the following steps:

In the menu bar click **File->Repository->Open Repository**. A file-selection dialog appears. Locate the sample repository of the **TFORMer Server** installation (usually **C:\Program Files\TEC-IT\TFORMer Server 4\ TFORMerServer.tfr**) – and open this repository - the following screen appears:

Picture 19: TFORMer Designer – Repository

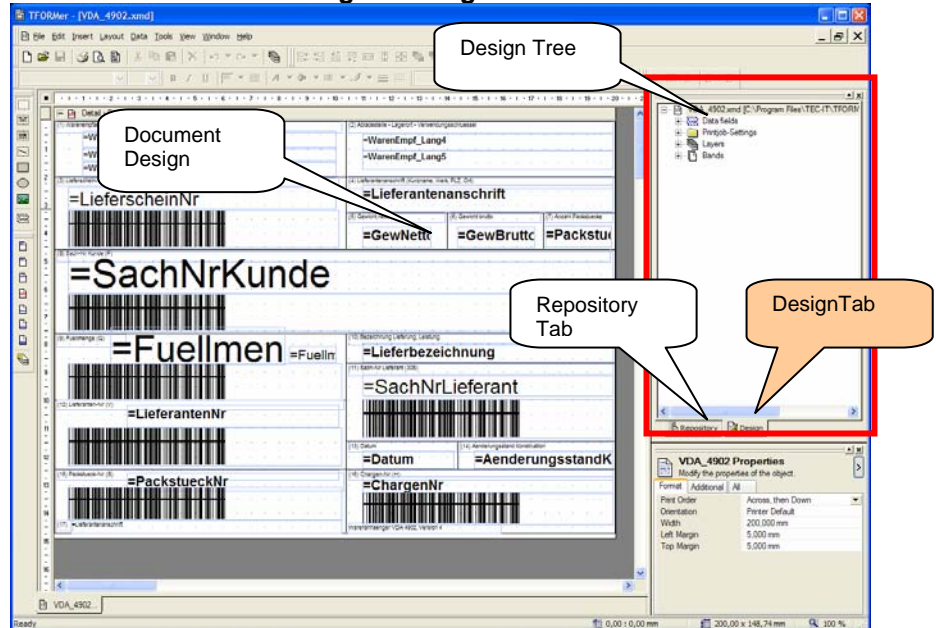


As you can see in the screen shot **TFORMer** displays two tabs now:

Repository Tab: This tab displays the repository in a tree-like structure. This is used for modifying TFORMer Server parameters.

If you open the Project branch there is one sample project named “P1”. It contains exactly one form layout (a VDA 4902 label). If you double-click the layout name “VDA4902” **TFORMer** switches to design mode:

Picture 20: TFORMer Designer Design Mode



Design Tab: In design mode it is possible to change the document or layout according to the actual requirements. Instant preview – and test prints are available directly from within TFORMer Designer (without the requirement of a working TFORMer Server installation).

8.5 Trying TFORMer

When testing TFORMer features please keep the following important hints in mind:

- After modifying a form layout or the repository don't forget to save the changes. Otherwise TFORMer Server will not work with the new settings.
- Changing a TFORMer Repository or a document layout requires a restart of TFORMer Server. This can be done with TFORMer SpoolAdmin.

8.6 More Information

Detailed explanation of TFORMer Designer features and the Repository-settings (like the configuration of TFORMer Server) is available in the documentation. Please refer to the following documents:

- TFORMer Designer V41 - Reference to TFORMer Designer
- TFORMer Tutorial V41 - Tutorial to TFORMer Designer
- TFORMer Server V41 - Reference to TFORMer Server and Repository configuration

9 Contact

Please contact us for technical or commercial questions:

TEC-IT Datenverarbeitung GmbH
Wagnerstrasse 6
A-4400 Steyr
Austria/Europe

➤ Phone:	+43 / (0)7252 / 72 72 0
➤ Fax:	+43 / (0)7252 / 72 72 0 – 77

➤ Email:	office@tec-it.com
➤ Web:	http://www.tec-it.com
➤ Web:	http://www.tformer.com

10 Support

➤ Telefon:	+43 / (0)7252 / 72 72 0
➤ Fax:	+43 / (0)7252 / 72 72 0 – 77

➤ Email:	support@tec-it.com
➤ Web:	http://www.tec-it.com/support/

Contact

Support

Windows is a registered trademark of Microsoft Corporation,
SAP and SAP R/3 are registered trademarks of SAP AG, Germany
ORACLE is a registered trademark of ORACLE Corporation, USA
AS/400 is a registered trademark of IBM Corporation